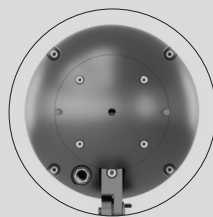
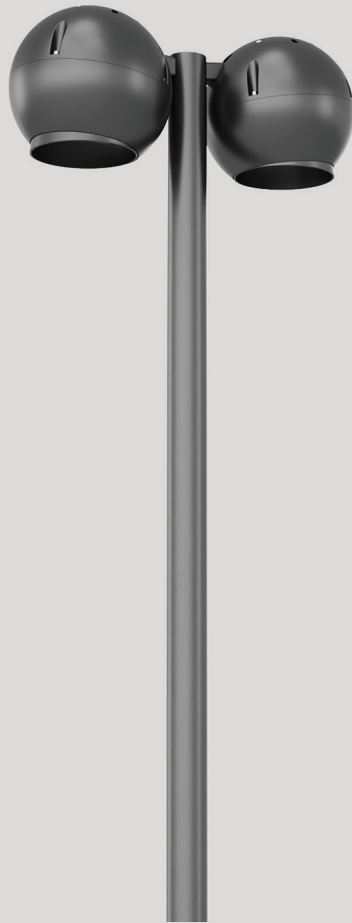


MIDI STREET LIGHT

divinitylights





MIDI STREET LIGHT

Midi Street Light has :

- Luminaire housing of die cast- aluminium
- Street/road and parking lighting applications
- Extremely robust construction
- Z Ball available in 3000 to 7000 lumens
- Zero multiple shadows
- Various beam angle range from 20°/ 40°/ 60°
- Precise optics and beautiful form factor make the Z Ball Midi a suitable choice for floodlighting, area lighting and facade lighting applications.
- Interpretation of the real environment light
- Finned heat sinks to dissipate heat and increase performance

Quick Info

CRI ≥ 90

2700K, 3000K, 4000K

Non-Dimmable/ Dali-Dimmable

SDCM<3

Lens

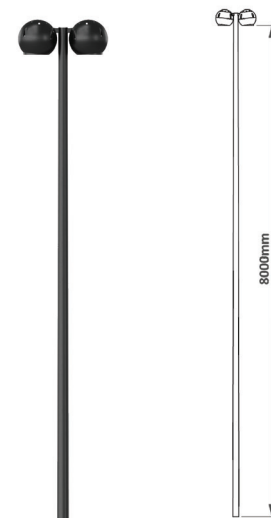
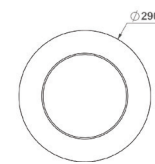
L70 @50,000h

Aluminium Die-Cast

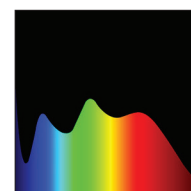
Types

Pole Mounted

Single Line Diagram



Light Distribution



CRI ≥ 90

MIDI STREET LIGHT



Product Order Code	System Power	Dimensions
1523	100W	Dia=290mm, H=8000mm

Order Options

CCT (Colour Temperature)

2700K
3000K
4000K

CRI

>90

Beam Angle

Narrow
Medium
Wide

Control

Non-Dimmable
Dali-Dimmable



Mounting Type

Pole Mounted

Material Colour

Black
Grey

